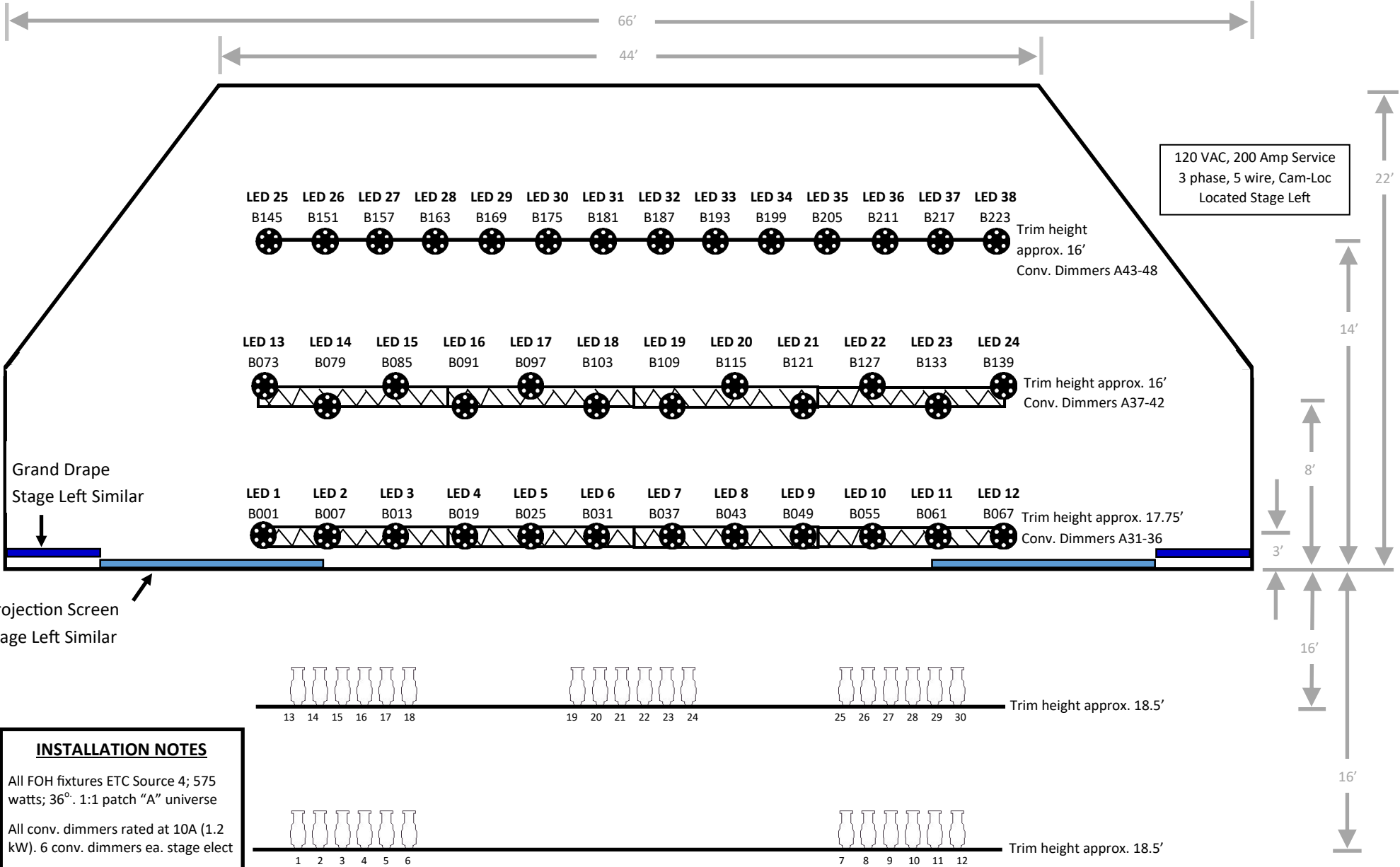




SEASIDE
CIVIC AND CONVENTION CENTER



INSTALLATION NOTES

All FOH fixtures ETC Source 4; 575 watts; 36°. 1:1 patch "A" universe

All conv. dimmers rated at 10A (1.2 kW). 6 conv. dimmers ea. stage elect

LED 1-24 Elation SIXPAR 300; 6 Chan. mode. "B" universe

LED 25-38 Elation SIXPAR 200; 6 Chan. mode. "B" universe

Readdressing dimmers or reconfiguring installed equipment is prohibited

NOT TO SCALE

SCCC Light Plot

Typical Configuration

Rev. 4.1 Mar 2018